

# Supply Base Report: Graanul Invest SIA (Laukalne)

[www.sustainablebiomasspartnership.org](http://www.sustainablebiomasspartnership.org)



## Completed in accordance with the Supply Base Report Template Version 1.2

*For further information on the SBP Framework and to view the full set of documentation see [www.sustainablebiomasspartnership.org](http://www.sustainablebiomasspartnership.org)*

### *Document history*

*Version 1.0: published 26 March 2015*

*Version 1.1 published 22 February 2016*

*Version 1.2 published 23 June 2016*

© Copyright The Sustainable Biomass Partnership Limited 2016

# Contents

<b>1</b>	<b>Overview .....</b>	<b>1</b>
<b>2</b>	<b>Description of the Supply Base .....</b>	<b>2</b>
2.1	General description .....	2
2.2	Actions taken to promote certification amongst feedstock supplier .....	10
2.3	Final harvest sampling programme .....	10
2.4	Flow diagram of feedstock inputs showing feedstock type [optional] .....	11
2.5	Quantification of the Supply Base .....	11
<b>3</b>	<b>Requirement for a Supply Base Evaluation .....</b>	<b>13</b>
<b>4</b>	<b>Supply Base Evaluation .....</b>	<b>14</b>
4.1	Scope .....	14
4.2	Justification .....	14
4.2.1	Primary and secondary feedstock supplies from Latvian forest properties .....	14
4.2.2	Primary feedstock supplies from Estonian forest properties .....	14
4.3	Results of Risk Assessment .....	15
4.3.1	Primary and secondary feedstock supplies from Latvian forest properties .....	15
4.3.2	Primary feedstock supplies from Estonian forest properties .....	15
4.4	Results of Supplier Verification Programme .....	15
4.4.1	Primary and secondary feedstock supplies from Latvian forest properties .....	15
4.4.2	Primary feedstock supplies from Estonian forest properties .....	15
4.5	Conclusion .....	15
4.5.1	Primary and secondary feedstock supplies from Latvian forest properties .....	15
4.5.2	Primary feedstock supplies from Estonian forest properties .....	16
<b>5</b>	<b>Supply Base Evaluation Process .....</b>	<b>17</b>
<b>6</b>	<b>Stakeholder Consultation .....</b>	<b>18</b>
6.1	Response to stakeholder comments .....	18
<b>7</b>	<b>Overview of Initial Assessment of Risk .....</b>	<b>21</b>
7.1	Primary and secondary feedstock supplies from Latvian forest properties .....	21
7.2	Primary feedstock supplies from Estonian forest properties .....	22
<b>8</b>	<b>Supplier Verification Programme .....</b>	<b>23</b>

8.1	Description of the Supplier Verification Programme .....	23
8.1.1	Primary and secondary feedstock supply from Latvian forest properties .....	23
8.1.2	Primary feedstock supplies from Estonian forest properties .....	23
8.2	Site visits .....	23
8.2.1	Primary and secondary feedstock supplies from Latvian properties.....	23
8.2.2	Primary feedstock supplies from Estonian forest properties .....	24
8.3	Conclusions from the Supplier Verification Programme.....	24
8.3.1	Primary and secondary feedstock supplies from Latvian forest properties.....	24
8.3.2	Primary feedstock supplies from Estonian forest properties .....	25
<b>9</b>	<b>Mitigation Measures.....</b>	<b>26</b>
9.1	Mitigation measures .....	26
9.1.1	Primary and secondary feedstock supplies from Latvian forest properties.....	26
9.1.2	Primary feedstock supplies from Estonian forest properties .....	27
9.2	Monitoring and outcomes .....	27
9.2.1	Primary and secondary feedstock supplies from Latvian forest properties.....	27
9.2.2	Primary feedstock supplies from Estonian forest properties .....	28
<b>10</b>	<b>Detailed Findings for Indicators .....</b>	<b>29</b>
<b>11</b>	<b>Review of Report.....</b>	<b>30</b>
11.1	Peer review .....	30
11.2	Public or additional reviews .....	30
<b>12</b>	<b>Approval of Report.....</b>	<b>31</b>
<b>13</b>	<b>Updates .....</b>	<b>32</b>
13.1	Significant changes in the Supply Base .....	32
13.2	Effectiveness of previous mitigation measures .....	32
13.3	New risk ratings and mitigation measures .....	32
13.4	Actual figures for feedstock over the previous 12 months .....	32
13.5	Projected figures for feedstock over the next 12 months .....	32

# 1 Overview

**Producer name:** SIA Graanul Invest, production site Launkalne  
**Producer location:** Ezerini, Launkalnes parish, Smiltenes district, Latvia LV-4718,  
**Geographic position:** 57.343403, 25.855406  
**Primary contact:** Haralds Vīgants (Executive director), telephone: +371 28321880,  
 email: [haralds.vigants@graanulinvest.com](mailto:haralds.vigants@graanulinvest.com)  
**Company website:** [www.graanulinvest.com](http://www.graanulinvest.com)  
**Date report finalised:** 29/Feb/2016  
**Close of last CB audit:** 02/Mar/2016. Launkalne  
**Name of CB:** NEPCon SIA  
**Translations from English:** Yes  
**SBP Standard(s) used:** Standard 2 version 1.1; Standard 4, version 1.1; Standard 5 version 1.1  
**Weblink to Standard(s) used:** <http://www.sustainablebiomasspartnership.org/documents>  
**SBP Endorsed Regional Risk Assessment:** not applicable  
**Weblink to SBE on Company website:** <http://www.latgran.com/en/policy/sustainable-biomass-partnership>

Indicate how the current evaluation fits within the cycle of Supply Base Evaluations				
Main (Initial) Evaluation	First Surveillance	Second Surveillance	Third Surveillance	Fourth Surveillance
<b>X</b>	<input type="checkbox"/>	<input type="checkbox"/>	<input type="checkbox"/>	<input type="checkbox"/>

## 2 Description of the Supply Base

### 2.1 General description

SIA "Graanul Invest" most of the raw materials as feedstock primary and secondary from feedstock originating from Latvian and Estonia, as well as a small part of the raw material, which is indirectly supply after wood processing as secondary feedstock from Lithuania and Belarus.

*Controlled Feedstock, 87 %, 18 suppliers of primary feedstock, 5 sawdust and 6 chips suppliers*

*SBP-compliant Primary Feedstock, 11%, 1 supplier*

*SBP-compliant Secondary Feedstock, 2%, 1 supplier*

*SBP-compliant Tertiary Feedstock, 0%*

*SBP non-compliant Feedstock 0%*

Species: Picea abies (L.) H. Karst.); Pinus sylvestris (L.); Alnus glutinosa (L.) Gaertn.); Alnus incana (L.) Moench) Populus tremula (L.); Betula pendula (Roth; silver; Betula pubescens (Ehrh.)

### LATVIA forest resources

In Latvia, forests cover area of 3 056 578 hectares. According to the data of the State Forest Service (concerning the surveyed area allocated to management activities regulated by the Forest Law), forest Land amounts to 51.8 % (ratio of the 3 347 409 hectares covered by forest to the entire territory of the country). The Latvian State owns 1 495 616 ha of forest (48.97% of the total forest area), while the other 1 560 961 ha (51.68 % of the total forest area) belong to other owners. Private forest owners in Latvia amount to approximately 144 thousand.

The area covered by forest is increasing. The expansion happens both naturally and by afforestation of infertile land unsuitable for agriculture.

Within the last decade, the timber production in Latvia has fluctuated between 9 and 13 million cubic metres (State Forest Services: vmd.gov.lv, 2015).

#### **Forest land consists of:**

- forests 3 056 578 ha (91.3%);
- marshes 175 111.8 ha (5.3%);
- glades (forest meadows) 35 446.7 ha (1.1%);
- flooded areas 18 453.2 ha (0,5%);
- objects of infrastructure 61 813.4 ha (1.8%).

State Forest Services: vmd.gov.lv, 2015.

#### **Distribution of forests by the dominant species:**

- pine 34.3 %;
- spruce 18.0 %;
- birch 30.8 %;
- black alder 3.0 %;

- grey alder 7.4 %;
- aspen 5.4 %;
- oak 0.3 %;
- ash 0.5 %;
- other species 0.3 %.

State Forest Services: vmd.gov.lv, 2015.

**Share of species used in reforestation, by planting area (2014):**

- pine 20 %;
- spruce 17 %;
- birch 28 %;
- grey alder 12 %;
- aspen 20 %;
- other species 3 %.

State Forest Services: vmd.gov.lv, 2015.

**Timber production by types of cuts, by volume produced (2014):**

- final cuts 81.00 %;
- thinning 12.57 %;
- sanitary clear-cuts 3.63 %;
- sanitary selective cuts 1.43 %;
- deforestation cuts 0.76 %;
- other types of cuts 0.06 %.

State Forest Services: vmd.gov.lv, 2015.

**The field of forestry**

In Latvia, the field of forestry is supervised by the Ministry of Agriculture, which in cooperation with stakeholders of the sphere develops forest policy, development strategy of the field, as well as drafts of legislative acts concerning forest management, use of forest resources, nature protection and hunting ([www.zm.gov.lv](http://www.zm.gov.lv)).

Implementation of requirements of the national law and regulations notwithstanding the type of tenure is carried out by the State Forest Service under the Ministry of Agriculture (State Forest Services: [www.vmd.gov.lv](http://www.vmd.gov.lv)).

Management of the state-owned forests is performed by the *Joint Stock Company "Latvia's State Forests"*, established in 1999. The enterprise ensures implementation of the best interests of the state by preserving value of the forest and increasing the share of forest in the national economy ([www.lvm.lv](http://www.lvm.lv)).

Export yielded 1.978 billion euro (approx. 20 % of the total amount in 2014)..

**Biological diversity**

Historically, extensive use of forests as a source of profit began later than in many other European countries, therefore a greater biological diversity has been preserved in Latvia.

For the sake of conservation of natural values, a total number of 674 protected areas have been established. Part of the areas have been included in the European network of protected areas *Natura 2000*. Most of the protected areas are state-owned.

In order to protect highly endangered species and biotopes located without the designated protected areas, if a functional zone does not provide that, micro-reserves are established. According to data of the State Forest Service (2015), the total area of micro reserves is 40 595 ha. Identification and protection planning of biologically valuable forest stands is carried out continuously.

On the other hand, for preservation of biological diversity during forest management activities, general nature protection requirements binding to all forest managers have been developed. They stipulate that at felling selected old and large trees, dead wood, underwood trees and shrubs, land cover around wet micro-lowlands (terrain depressions) are to be preserved, thus providing habitat for many organisms.

Latvia has been a signatory of the CITES Convention since 1997. CITES requirements are respected in forest management, although there are no species included in the CITES lists in Latvia.

### **Forest and community**

Areas where recreation is one of the main forest management objectives add up to 8 % of the total forest area or 293 000 ha (2012y). Observation towers, educational trails, natural objects of culture history value, picnic venues: they are just a few of recreational infrastructure objects available to everyone free of charge. Special attention is devoted to creation of such areas in state-owned forests. Recreational forest areas include national parks (excluding strictly protected areas), nature parks, protected landscape areas, protected dendrological objects, protected geological and geomorphologic objects, nature parks of local significance, the Baltic Sea dune protection zone, protective zones around cities and towns, forests within administrative territory of cities and towns. Management and governance of specially protected natural areas in Latvia is co-ordinated by the Nature Conservation Agency under the Ministry for Environmental Protection and Regional Development.

### **Certification**

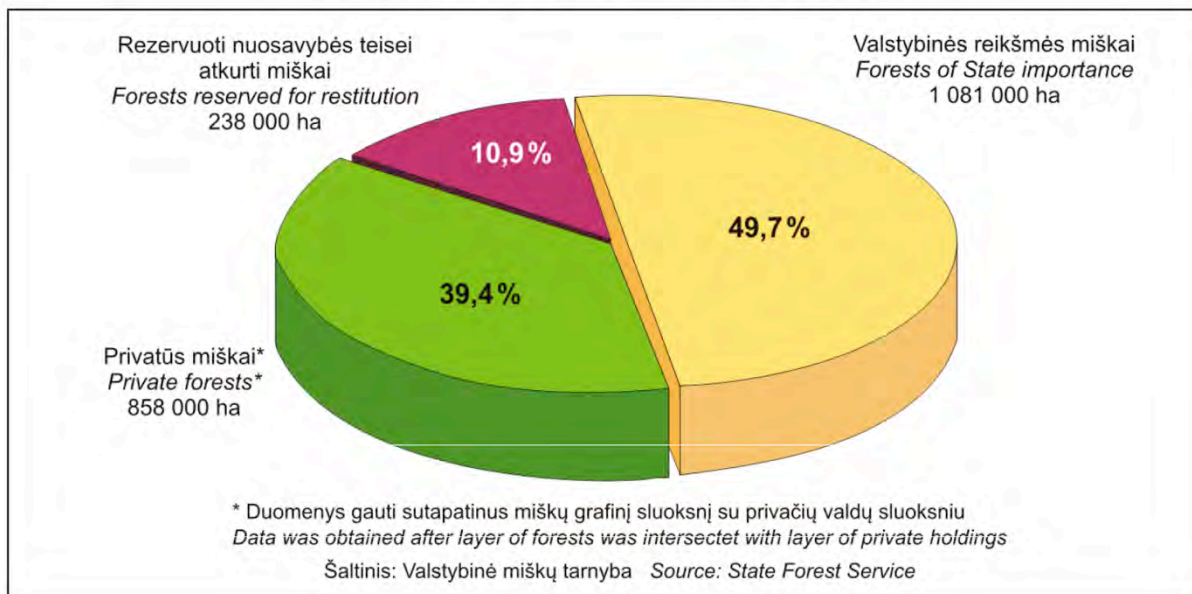
All forest area of Latvijas valsts meži as well as some part of forests in private and other ownership are FSC and PEFC certified. From all totally forest area 3 347 409ha is approximately 1,737 milj. ha of Latvian forest are certified according to FSC and PEFC certification scheme. Both the FSC and PEFC systems have found their way into Latvia.

## LITHUANIA forest resources

Agricultural land covers more than 50 percent of Lithuania. Forested land consists of about 28 percent, with 2,18 million ha, while land classified as forest corresponds to about 30 percent of the total land area. The south-eastern part of the country is most heavily forested, and here forests cover about 45 percent of the land. The total land area under the state Forest Enterprises is divided into forest and non-forest land. Forest land is divided into forested and non-forested land. The total value added in the forest sector (including manufacture of furniture) reached LTL 4.9 billion in 2013 and was 10% higher than in 2012.



**FOREST LAND BY OWNERSHIP 01.01.2014**



Forest land is divided into four protection classes: reserves (2 %); ecological (5.8 %): protected (14.9 %); and commercial (77.3 %). In reserves all types of cuttings are prohibited. In national parks, clear cuttings are prohibited while thinnings and sanitary cuttings are allowed. Clear cutting is permitted, however, with certain restrictions, in protected forests; and thinnings as well. In commercial forests, there are almost no restrictions as to harvesting methods.

Lithuania has been a signatory of the CITES Convention since 2001. CITES requirements are respected in forest management, although there are no species included in the CITES lists in Lithuania.

Lithuania is situated within the so-called mixed forest belt with a high percentage of broadleaves and mixed conifer-broadleaved stands. Most of the forests - especially spruce and birch - often grow in mixed stands. Pine forest is the most common forest type, covering about 38 percent of the forest area. Spruce and birch account for about 24 and 20 percent respectively. Alder forests make up about 12 percent of the forest area, which is fairly high, and indicates the moisture quantity of the sites. Oak and ash can each be found on about 2 percent of the forest area. The area occupied by aspen stands is close to 3 percent.

The growing stock given as standing volume per hectare is on the average of 180 m<sup>3</sup> in Lithuania. In nature stands, the average growing stock in all Lithuanian forests is about 244 m<sup>3</sup> per hectare. Total annual growth comes to 11 900 000 m<sup>3</sup> and the mean timber increment has reached 6.3 m<sup>3</sup> per year and per hectare.

Current harvest has reached some 3.0 million m<sup>3</sup> u.b. per year. The consumption of industrial wood in the domestic forest industry, including export of industrial wood, is estimated to be less than 2.0 million m<sup>3</sup>. The remainder is used for fuel or stored in the forests, with a deteriorating quality as a result.

The potential future annual cut is calculated at 5.2 million m<sup>3</sup>, of which 2.4 million m<sup>3</sup> is made up of sawn timber and the remaining 2.8 million m<sup>3</sup> of small dimension wood for pulp or board production, or for fuel. The figures refer to the nearest 10-year period. Thereafter a successive increase should be possible if more intensive and efficient forest management systems are introduced.

Certification of all state forests in Lithuania is done according to the strictest certification in the world – the FSC (Forest Stewardship Council) certificate. The audit of this certificate testifies to the fact that Lithuanian

state forests are managed especially well – following the principles of the requirements set to protection of and an increase in biological diversity.

(Resources: <http://www.fao.org/docrep/w3722e/w3722e22.htm>)

### BELARUS forest resources

In Belarus forests cover area of 9,5 milj hectares. According to the data of the State Forest Ministry Woodedness amounts to 39,3 %

Country area 20760 (1000 Ha);

Agricultural area 8796 (1000 Ha);

Land area 20291 (1000 Ha);

Forest area 8707.6 (1000 Ha);

Forest industry input into IKP is 1,1%;

The area covered by forest is increasing. The expansion happens both naturally and by afforestation of infertile land unsuitable for agriculture.

Within the last decade, the timber production in Belarus has fluctuated aprox., 11 million cubic metres (<http://www.mlh.by> , 2015.)

**Forest land consists of:**

**Area (1000 hectares)**

Forest	7,894
Other wooded land	914
Forest and other wooded land	8,808
Other land	11,94
Total land area	20,748
Inland water bodies	12
Total area of country	20,76

Source: <http://www.mlh.by> , 2015.

**Distribution of forests by the dominant species:**

- pine 50,4%;
- spruce 9,2%;
- birch 23,1%;
- black alder 3,3%;
- grey alder 3,3 %;
- aspen 2,1%;

- other species 3,3%.

Source: <http://www.mlh.by> , 2015.

#### **Timber production by types of cuts, by volume produced (2013):**

- final cuts 34,5 %;
- thinning 45,79 %;
- other types of cuts 19,62 %.

Source: <http://www.mlh.by>,

#### **The field of forestry**

Management of the state-owned forests is performed by different types of state organizations.

#### **Biological diversity**

Belarus has been a signatory of the CITES Convention since 1995. CITES requirements are respected in forest management, although there are no species included in the CITES lists in Belarus.

Forest regeneration is carried out annually over an area of 32,000 ha, including 81% of the forest planting and seeding and 19% by natural regeneration. <http://belstat.gov.by/> (2015.y.)

There are 2 strictly protected National reserves and 4 National parks present in Belarus at the moment. Area of National reserves accounts 2,98 milj ha and area of National parks is 3,98 milj ha.

#### **Forest and community**

In 2014 in all kinds of felling there were harvested 12,5 million m<sup>3</sup> marketable timber.

Foreign trade surplus made USD 104 million. 1.9 million cubic meter round timber and 191.8 thousand cubic meter sawn timber were sold abroad.

Forest products and services were exported to 25 states, including 95,3% to the near abroad and 4,7% to the remote countries. Among the main forest export directions are Poland (47,9% of the total export volume in value terms), Germany (11,4%), Lithuania (10%), Latvia (8,62%), the Netherlands (3,3%), Belgium (3,46%), Sweden (3,25%).

#### **Certification**

All forest area is certified by PEFC certification scheme. 8,1milj. ha (95 floristries) are certified according to PEFC.

FSC 6,8 milj. ha (81 forestry's) are certified according to FSC FM standards.

Both the FSC and PEFC systems have found their way into Belarus.

## **ESTONIA forest resources**

Estonia is a member of the European Union since 2004. The Estonian legislation is in compliance with the EU's legislative framework and directives. National legislative acts make references to the international framework. All legislation is drawn up within a democratic system, subject to free comment by all

stakeholders<sup>1</sup>. The Estonian legislation provides strict outlines in respect to the usage of forestry land and the Estonian Forestry Development Plan 2020<sup>2</sup> has clear objectives and strategies in place to ensure the forestland is protected up to the standards of sustainable forest management techniques. The Ministry of the Environment coordinates the fulfilment of state duties in forestry. The implementation of environmental policies and its supervision are carried out by two separate entities operating under its governance. The Estonian Environmental Board monitors all of the work carried out in Estonia's forests whereas the Environmental Inspectorate exercises supervision in all areas of environmental protection.

The forest is defined in the Forest Act. There are three main forest categories are described in this legislation: commercial forest, protection forest and protected forests. According to the ownership, forests are also divided into private forests, municipality forests and state owned forests. The state-owned forest represents approximately 40% of the total forest area<sup>3</sup> and is certified according to FSC and PEFC forest management and chain of custody standard in which the indicators related to forest management planning, maps and availability of forest inventory records are being constantly evaluated and addressed<sup>4</sup>. The state forest is managed by State Forest Management Centre (RMK) which is a profit-making state agency founded on the basis of the Forest Act and its main duty lies in a sustainable and efficient management of state forest.

Currently more than 2 230 000 ha, equal to 51% of the Estonian land territory, is covered by forest as indicated in Figure 1 and the share of forest land is growing. According to FAO data, during 2000 - 2005, average annual change in the forest cover was +0.4 %<sup>5</sup>. Forestry Development Plan 2012-2020 and Yearbook Forest 2013, that gives annual reports and facts about the forest in Estonia, state that during last decade the cutting rate in Estonian forests is from 7 to 11 mill m<sup>3</sup> per year<sup>6</sup>. The amount is in line with sustainable development principle when the cutting rate doesn't exceeds the annual increment and gives the potential to meet the long-term the economic, social and environmental needs. According to the Forestry Development Plan 2012-2020 the sustainable cutting rate is 12-15 mil ha per year.

---

<sup>1</sup> [http://europa.eu/about-eu/countries/member-countries/estonia/index\\_en.htm](http://europa.eu/about-eu/countries/member-countries/estonia/index_en.htm)

<sup>2</sup> Original title: „Eesti metsanduse arengukava aastani 2020“; approved by Estonians parliament decision nr 909 OE 15. February 2011.a  
[http://www.envir.ee/sites/default/files/elfinder/article\\_files/mak2020vastuvoetud.pdf](http://www.envir.ee/sites/default/files/elfinder/article_files/mak2020vastuvoetud.pdf)

<sup>3</sup> <http://www.rmk.ee/organisation/operating-areas>

<sup>4</sup> <http://www.rmk.ee/organisation/environmental-policy-of-rmk/certificates>

<sup>5</sup> <http://www.fao.org/forestry/country/32185/en/est/>

<sup>6</sup> Yearbook Forest 2013 [http://www.keskkonnainfo.ee/failid/Mets\\_2013.pdf](http://www.keskkonnainfo.ee/failid/Mets_2013.pdf) (all key figures, graphs and tables are bilingual)

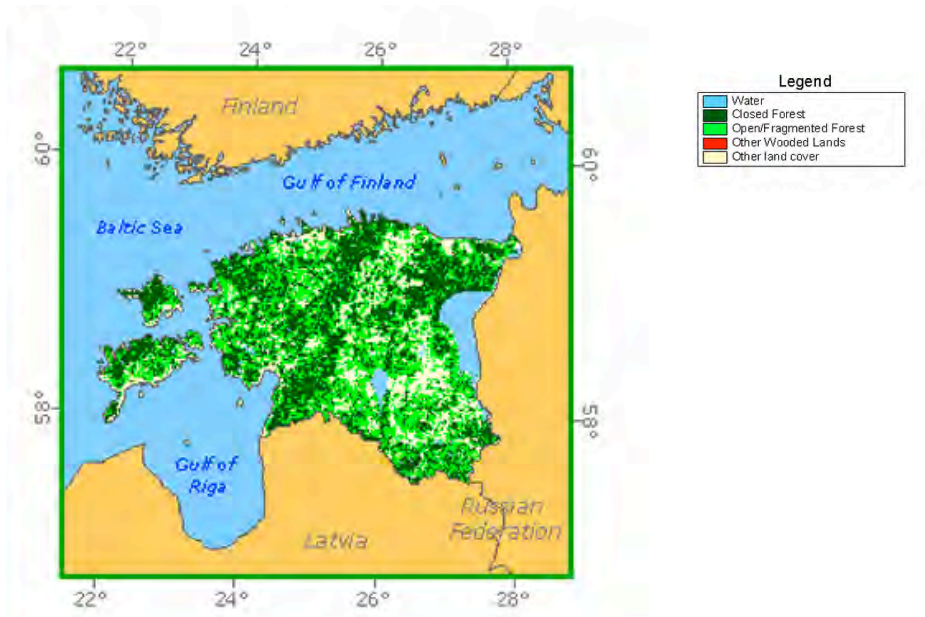


Figure 1. Forest cover of Estonia (FAO: <http://www.fao.org/forestry/country/en/est/>).

The distribution of growing stock by tree species in Estonia is shown in Figure 2.

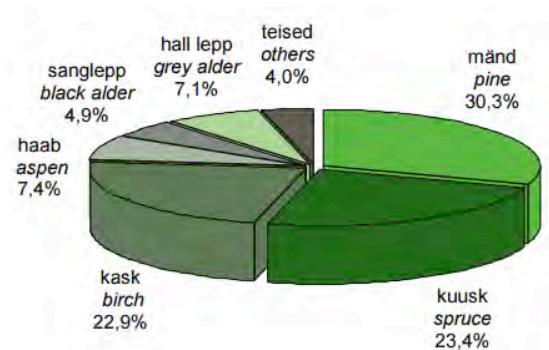


Figure 2. The distribution of growing stock by tree species (Yearbook Forest 2013).

For logging in any type of forest, it is required that a valid forest inventory or forest management plan, along with a felling permit issued by the Environmental Board, is available. All issued felling permits and forest inventory data is available in the public forest registry online database<sup>7</sup>.

Area of protected forests accounts to 25.3% of the total forest area whereas 10% is considered to be under strict protection. The majority of protected forests is located on state property. The main regulation governing the preservation of biodiversity and the sustainable use of natural resources is the Nature Conservation Act<sup>8</sup>. Estonia has signed the Convention on International Trade in Endangered Species of Wild Fauna and Flora

<sup>7</sup> <http://register.metsad.ee/avalik/>

<sup>8</sup> <https://www.riigiteataja.ee/en/eli/517062015004/consolide>

(CITES) in 1992<sup>9</sup> and joined the International Union for Conservation of Nature (IUCN) in 2007<sup>10</sup>. There are no CITES or IUCN protected tree species naturally growing in Estonia.

According to the Forestry Yearbook 2013 the wood, paper and furniture industry (503.5 million euro) contributed 21.6% to the total sector providing 3.3% of the total value added. Forestry accounted for 1.6% of the value added.

In Estonia, it is permitted to access natural and cultural landscapes on foot, by bicycle, skis, boat or on horseback. Unmarked and unrestricted private property may be accessed any time and pick berries, mushrooms, medicinal plants, fallen or dried branches, unless the owner forbids it. On unmarked and unrestricted private property camping is allowed for 24 hours. RMK creates exercising and recreational opportunities in nature and in recreational and protection zones and provides education about the natural environment which are free to access.<sup>11</sup>

## 2.2 Actions taken to promote certification amongst feedstock supplier

For the production of SBP pellets are mostly used FSC and PEFC certified supplier material (14%). The company policy is to give a preference to certified suppliers. Raw material (sawdust, consists of wood waste from main production of suppliers. Therefore, uncertified and new suppliers are invited to certify their base production and get benefit from residues. During preparation for SBP certification, the company has increased the share of FSC-certified raw materials from 5 to 20 %, and the management of the company has decided to increase procurement of *FSC certified* materials by more than 50 % between till December 2016

## 2.3 Final harvest sampling programme

The proportion of biomass quantity as primary raw material after final fellings is about 25-35% compared to quantity of other raw material assortment. The primary raw material has been procured from the Supply Base area and it consists of round wood/firewood. The raw materials are procured in well developed, free and open market with competition of other customers. Different assortments of raw materials are obtained from the logging. All companies of forest industry have public price lists for the assortments. The price lists reflect the solvency of the industry for different assortments. The price lists clearly indicate that logs and veneer logs are the most valuable assortments while firewood (e.g. for pellet production) is less valuable assortment. This information is derived from the documents and data submitted by suppliers and forest developers.

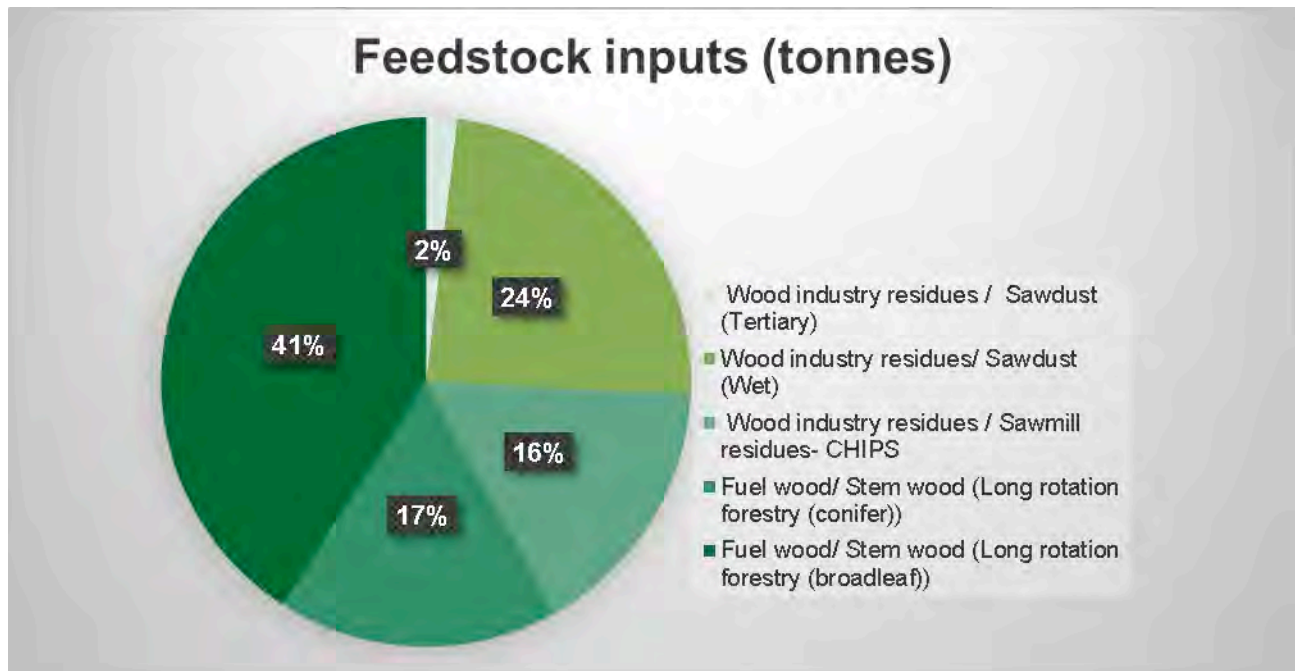
---

<sup>9</sup> <http://www.envir.ee/et/cites>

<sup>10</sup> <http://www.envir.ee/et/iucn>

<sup>11</sup> [https://www.eesti.ee/eng/topics/citizen/keskkond\\_loodus/maa/metsandus\\_1](https://www.eesti.ee/eng/topics/citizen/keskkond_loodus/maa/metsandus_1)

## 2.4 Flow diagram of feedstock inputs showing feedstock type [optional]



## 2.5 Quantification of the Supply Base

Provide metrics for the Supply Base including the following. Where estimates are provided, these shall be justified.

### Supply Base

- Total Supply Base area (ha): 16,97 million ha cumulative area of all forest types within SB
- Tenure by type (ha): Government 13,2 million ha; Privately owned 3,17 million ha; other ownership types 0,6 million ha.
- Forest by type (ha): boreal 16 966 578 million ha,
- Forest by management type (ha): Managed Semi- Natural 16 966 578 milj., ha
- Certified forest by scheme (ha): 11689000 hectares of FSC and 10990000 ha PEFC-certified forest in 2015

### Feedstock

- Total volume of Feedstock: 400,000 – 600,000 tonnes
- Volume of primary feedstock: 200,000 – 400,000 tonnes
- List percentage of primary feedstock (g), by the following categories. Subdivide by SBP-approved Forest Management Schemes:
  - Certified to an SBP-approved Forest Management Scheme
  - Not certified to an SBP-approved Forest Management Scheme
- List all species in primary feedstock:  
Species: Picea abies (L.) H. Karst.); Pinus sylvestris (L.); Alnus glutinosa (L.) Gaertn.); Alnus incana (L.) Moench) Populus tremula (L.); Betula pendula (Roth; silver; Betula pubescens (Ehrh.)

- j. Volume of primary feedstock from primary forest- 0%
- k. List percentage of primary feedstock from primary forest (j), by the following categories. Subdivide by SBP-approved Forest Management Schemes:
  - Primary feedstock from primary forest certified to an SBP-approved Forest Management Scheme
  - Primary feedstock from primary forest not certified to an SBP-approved Forest Management Scheme
- l. Volume of secondary feedstock: **SAWDUST and WOOD chips (Sawmill residues)** feedstock as production waste from producers comes from Latvia, Estonia 0 – 200,000 tonnes  
specify origin and type - the volume may be shown as a % of the figure in (f) if a compelling justification is provided
- m. Volume of tertiary feedstock: 0 – 200,000 tonnes



### 3 Requirement for a Supply Base Evaluation

SBE completed	SBE not completed
X	<input type="checkbox"/>

In SBP biomass supply evaluation is included the supply of primary feedstock to SIA Graanul Invest, which confirms the supplied primary feedstock for the production of pellets as SBP-compliant. The evaluation process uses the risk assessment developed by the company, as in Latvia there is no single unified risk assessment approved by SPP, as well as inspection programme to reduce supply risks has been developed.

Risk assessment (RA) has been sent to a public consultation on February 8, 2016.

Risk assessment has been divided into: "Low risk", "Certain risk" or "Uncertain risk".

## 4 Supply Base Evaluation

### 4.1 Scope

- 4.1.1. Refers to primary feedstock supplies from Latvian forest properties after logging.
- 4.1.2. Refers to primary feedstock supplies from overgrown agricultural lands of Latvia.
- 4.1.3. Refers to secondary feedstock supplies from Latvia
- 4.1.4. Does not refer to secondary feedstock or other areas of origin.
- 4.1.5. Refers to primary feedstock supplies from Estonian forest properties after logging.

### 4.2 Justification

To reduce the supply risks, the primary and secondary feedstock in pellet production, pursuant to the risk assessment indicators, is subject to classification of risks of origin from potential risk to lower risk, in order to ensure full risk assessment and exclude feedstock supplies.

#### 4.2.1 Primary and secondary feedstock supplies from Latvian forest properties

The assessment has been designed in compliance with the SBP standard No. 1; No. 2 version 1.0, March 2015, by developing and introducing a mitigation programme to reduce risks of primary and secondary feedstock purchases.

During the risk development stage, the risk assessment version for Latvia was taken into account which was available during the consultation process on the SBP website.

Initially, the company developed risk assessment, by assessing each risk indicator of SBP standard No. 1 version 1.0., March 2015. The risk assessment was created, based on the laws of Latvia, abidance by the laws, publications, stakeholder consultations, and leading expert guidance, as well as other resources of information.

Upon consulting with stakeholders, communicating with logging / primary feedstock suppliers and wood processors (secondary raw material suppliers), the situation was studied, and, by defining certain risks, the company developed a risk mitigation system.

#### 4.2.2 Primary feedstock supplies from Estonian forest properties

SBP-approved risk assessment available on <http://www.sustainablebiomasspartnership.org/documents/risk-assessments/regional-risk-assessments-for-the-baltic-states/estonia> was applied to supplies from Estonia.

## 4.3 Results of Risk Assessment

### 4.3.1 Primary and secondary feedstock supplies from Latvian forest properties

Risk assessment analysis included regulatory activities prescribed in national laws and regulations.

Having regards to the peculiarities existing in Latvia, as well as expert proposals and recommendations, the following was used “Specified risk with regard to biotopes, labour safety, bird habitats and cultural heritage objects.”

### 4.3.2 Primary feedstock supplies from Estonian forest properties

In the regional risk assessment, “Specified risk” is applied with regard to potential threats to the protection of high conservation value biotopes.

## 4.4 Results of Supplier Verification Programme

### 4.4.1 Primary and secondary feedstock supplies from Latvian forest properties

On-site inspection results, which are described below and are linked to a specified risk, as well as documentary evidence on the performed audits that are available to third parties, allow obtaining information about the risk of supplies of each supplier at the supply level, to timely identify potentially possible threats in any of the specified risk indicators.

Information obtained during risk assessment from legislation and from on-site information verification about all SBE risk categories confirmed that specified risk is applicable to 4 categories (HCV category 3), labour safety and bird habitats (HCV category 1), and cultural history objects (HCV category 6), whereas in other categories, the risk is low.

Within the framework of the mitigation audit, the relevance of the specified risks in the forest management sector was confirmed.

### 4.4.2 Primary feedstock supplies from Estonian forest properties

It is known that Estonia has performed inventory of high conservation value biotopes, but logging in these territories is not prohibited, therefore the specific risk is topical.

## 4.5 Conclusion

### 4.5.1 Primary and secondary feedstock supplies from Latvian forest properties

By performing SBE since January and upon reviewing co-operation with companies falling within risk categories, effective information exchange has been ensured and timely mitigation of risks has been made possible. The implemented mitigation measures have resulted in 3 suppliers being evaluated as SBE low risk category supply level, 15 suppliers, who are in the process of implementing a monitoring system, and co-

operation with 4 suppliers has been terminated. The scope of purchased FSC and PEFC roundwood firewood feedstock ensures SBP compliant biomass base volume for Graanul Invest SIA. However, supply base risk confirmation and SBE certification assessment process by a third independent party is only the beginning to identify SBP compliant suppliers. In co-operation with stakeholders and environmental organisation members, the desirable co-operation effect with suppliers has been achieved, by explaining the risk factors and obtaining the desirable SBP compliant result of feedstock supplies.

Simultaneously, a risk mitigation system is implemented for wood processors (secondary feedstock suppliers). The system is based on monitoring of primary feedstock and introduction of a credit system of SBP compliant material.

By the end of 2016, it is planned to assess the conformity of all suppliers to the SBE requirements. In 2017, all requirements established for primary and secondary feedstock suppliers will correspond to the SBE requirements.

It is a potential risk that roundwood is supplied by such a supplier, who commits violations with regard to specified risk forest units, but who is included and confirmed as a supplier of SBP compliant assortment; additional audits are performed within the framework of procedures depending on the supplier's logging intensity.

#### 4.5.2 Primary feedstock supplies from Estonian forest properties

It is defined in the company's feedstock acceptance procedure that, upon accepting feedstock from Estonian forest properties, documentary references must be checked to make sure that certain biotopes are not found at the site of origin. No feedstock from biotope regions is accepted, therefore feedstock from Estonia is SBP compliant.

## 5 Supply Base Evaluation Process

Risk assessment results, based on site visits and consultations with forest management/ logging and wood processing companies regarding mitigation measures, were subjected to public discussion, public consultation was carried out with non-governmental organisations and societies. The company organises seminars for loggers, primary and secondary feedstock suppliers, by engaging experts, concerning certain risk indicators.

To reduce supply risks for primary and secondary feedstocks in pellet production, pursuant to risk assessment indicators, the risks of origin are classified from potential risk to lower risk, to ensure full risk assessment and exclude the supply of non-compliant feedstock.

The supply risk assessment system includes an audit mechanism plan for risk assessment within the framework of the supply base. The plan and inspection criteria are available at the company only upon special request due to confidentiality considerations.

To develop an SBE system, supply assessment and risk mitigation measures have been performed at SIA Graanul Invest, by attracting the existing staff, procurement manager, who is trained as a forest management engineer with a 20 years' experience on the wood procurement market in the Baltic States. The manager has a long-standing experience in maintaining an FSC system and wood origin assessment in forest management, 20 years of experience and knowledge in forest management and wood supplies, procurement and legislation matters.

SIA Lodret consultant — wood processing technologist with more than 13 years' experience in the timber industry, 8 years' experience as the leading auditor of FSC; PEFC forestry and supply certification.

The development of the SBP SBE mitigation system is based on experience with FSC supplies and FSC forest certification system and knowledge in forest management, as well as timber industry education and forestry supplies from the legislative viewpoint; consultations with governmental and non-governmental organisations.

## 6 Stakeholder Consultation

SIA Graanul Invest:

On 8 February 2016, SBP risk assessment was published on the website.

On 10 February 2016, a letter was sent electronically by informing the stakeholders about the risk assessment developed in accordance with the SBP standard. The list of stakeholders was created so as to include the maximum number of recipients, including economic, social and environmental representatives, as well as local governments.

Risk assessment is available at <http://www.latgran.com/en/policy/sustainable-biomass-partnership>

The list was sent to 230 recipients, and it is available at the company.

Simultaneously, face-to-face and over the phone stakeholder consultations were held, and seminars were attended regarding SBP implementation; lists are available at the company.

### 6.1 Response to stakeholder comments

The report as reviewed and returned to the following reviewers with commentary from the following:

Latvian World Wildlife Foundation — opinion, SBP risk assessment and recommendation

**Comment 1:** The special risk of the indicator 2.1.1 is applicable **to all uncertified forests**, and not only to private forests. Explanation — no evidence in practice that a better situation is observed in local government- or church-owned forests.

Remark — must promote the knowledge of logging work managers/performers regarding biodiversity protection measures, felling works, incl., recognisability of biotope signs, and experts of forest ecology should be involved in practice in special cases.

**Response 1:** Corrections have been included in the risk assessment, by including “...applicable **to all uncertified forests**”

**Comment 2:** The special risk of the indicator 2.1.2 is applicable **to all uncertified forests**, without emphasising the problem in privately owned forests. Explanation — no evidence in practice that a better situation is observed in local government- or church-owned forests.

**Response 2:** The indicator 2.1.2 has been updated to include “.... applicable **to all uncertified forests**”

**Comment 3:** In the findings part of the indicator 2.2.5, the last paragraph should emphasise that **currently** no risks are observed. Explanation — ever more often, discussions arise among forest ecology experts, nature specialists, non-governmental organisations in the sphere of wildlife, by voicing concerns of potential future risks as biomass extraction in felling sites is intensified.

**Response 3:** Additions have been made to the relevant part of indicator 2.2.5.

**Comment 4:** It can be agreed that special risk should not be applicable to indicator 2.3.2 should, however it must be indicated in the “Finding” section that the logging performers must improve (increase qualification) knowledge about the implementation of environmental and nature protection requirements in felling works, incl., in biotope protection.

**Response 4:** updated indicator 2.3.2, seminars are organised by Graanul Invest SIA to improve qualification for loggers and forest owners, by including a full spectrum of biotope characteristics, cultural history objects and bird habitats.

World Wildlife Foundation in Latvia — opinion about the SBP risk mitigation system and recommendation:

**Comment 5:** It is planned to involve a biotopes expert in the assessment of biotopes. By employing a specialist evaluation on site or by developing and updating questionnaires, it is necessary to engage experts, who are certified in compliance with Cabinet Regulations No. 267 of 16 March 2010 “Procedures for Certification of Experts in the Field of Conservation of Species and Biotopes and Supervision of the Activities Thereof” (The publicly available register of experts certified in the field of conservation of species and biotopes at [daba.gov.lv](http://daba.gov.lv));

**Response 5:** Certified biotope experts are and will be used in the creation of the system.

**Comment 6:** Identification of bird nesting sites and the risk mitigation mechanism training is planned 1x per year for new primary biomass suppliers, by engaging ornithologists or biotope experts. Training is to be included also in the part of biotopes

**Response 6:** To carry out supplies, a supplier must be trained and informed about the protected biotopes, bird and heritage values

**Comment 7:** Training must be organised at least once in 2 years also for the existing suppliers, in order to update their knowledge about biotopes and their identification. The training of the new and existing primary biomass suppliers must include also topics of general natural protection requirements in logging;

**Response 7:** The comment will be taken into account and procedures will be updated

**Comment 8:** In the future, it is necessary to assess the possibility of including in the audit also a general assessment of nature protection requirements in logging, because primary biomass development has a significant impact also on the preservation of deadwood and keeping certain underwood tree/shrub groups, specimen in felling sites;

**Response 8:** According to information at our disposal, this matter is topical near cities

**Comment 9:** Update with the applicable system of Nature Data Management of the Nature Protection Council Ozols ([http://www.daba.gov.lv/public/lat/dati1/dabas\\_datu\\_parvaldibas\\_sistema\\_ozols/](http://www.daba.gov.lv/public/lat/dati1/dabas_datu_parvaldibas_sistema_ozols/)).

**Response 9:** Procedure updated

**Comment 10:** From time to time, every several years, it is necessary to evaluate the risk mitigation practice and, if necessary, review the frequency of inspections and audits.

**Response 10:** Will definitely be assessed every year

Over-the-phone comments from the Nature Protection Council:

**Comment 11:** In Latvia, secular trees are protected by law and, to mitigate the risk, it is necessary to include the relevant clauses in the contract and specifications.

**Response 11:** The assortment is controlled with the relevant restrictions in the material specifications

The Latvian Ornithological Society has studied the SBP defined risk mitigation schemes and principles developed in 2016 by SIA “Graanul Invest”:

We appreciate the possible biotope assessment questionnaire developed by SIA “Graanul Invest”, which allows excluding especially protected biotopes, which can be important bird habitats, from logging. Additional security is offered by the fact that the said questionnaire includes also elements that are directly significant to birds, such as dried out deadwood or stumps, growing and dead trees pecked by birds, and large nests.

However, the identification and exclusion of especially protected biotopes from logging does not eliminate high risks for birds (including for especially protected species), therefore, we recommend the following mitigation measures:

**Comment 12:** To establish an obligation for the suppliers to suspend logging from 1 April until 30 June or if that is not feasible, during a period that is as close to the said period as possible, however not shorter than two months.

**Response 12:** We will be negotiating with suppliers, because, bearing in mind that April always corresponds to road closures and low logging intensity, works often are resumed only after reopening of roads.

**Comment 13:** In the biotope assessment questionnaire, assign 10 points to large nests, if any are found, or determine an obligation to obtain a certified bird expert opinion. Each large nest should be examined to make sure that it does not belong to a species, for the protection of which a micro-reserve should be created. Cases when there are more than three large nests per hectare (which would allow allocating 2 points), will be extremely rare, therefore there will be significant risks to the large nests that are not found in especially protected biotopes.

**Response 13:** We will take the proposal into account and will update the questionnaire, as well as will make changes in the procedures regarding the evaluation and recording of large nests.

Opinion of experts of species and biotopes:

**Comment 14:** With the help of a questionnaire, it is possible to identify forest stands that could be good quality protected biotopes (incl., forest stand key biotopes), and the quality criteria of which are based on structures important for biological diversity. The survey will help identify also several potential biotope places in cases when a large part of structural elements are not decisive factors in identification — these are quagmires, marshy forests and gorge and slope forests. Assessment of deadwood allows to evaluate the food base available for birds.

Labour safety consultations:

**Comment 15** The questionnaire is expected to identify the key risk factors that employees working at a felling site might be subjected to. The questionnaire has been developed based on Cabinet Regulations No. 310 “Labour safety requirements in forest management”



## 7 Overview of Initial Assessment of Risk

### 7.1 Primary and secondary feedstock supplies from Latvian forest properties

The below table offers a summary of risk assessment. The risk assessment was performed based on theoretical information that is obtained from laws, scientific materials, publications, State Forest Service data. After the publication of the risk assessment, SIA Graanul Invest started on-site verification of two identified risks. The results are shown in Paragraphs 7 and 8.

Table 1. Overview of results from the risk assessment of all Indicators (prior to SVP)

Indicator	Initial Risk Rating			Indicator	Initial Risk Rating		
	Low	Specified	Unspecified		Low	Specified	Unspecified
1.1.1.	X			2.2.9.	X		
1.1.2.	X			2.3.1.	X		
1.1.3.	X			2.3.2.	X		
1.2.1.	X			2.3.3.	X		
1.3.1.	X			2.4.1.	X		
1.4.1.	X			2.4.2.	X		
1.5.1.	X			2.4.3.	X		
1.6.1.	X			2.5.1.	X		
2.1.1.		X		2.5.2.	X		
2.1.2.		X		2.6.1.	X		
2.1.3.	X			2.7.1.	X		
2.2.1.	X			2.7.2.	X		
2.2.2.	X			2.7.3.	X		
2.2.3.	X			2.7.4.	X		
2.2.4.	X			2.7.5.	X		
2.2.5.	X			2.8.1.		X	
2.2.6.	X			2.9.1.	X		
2.2.7.	X			2.9.2.	X		
2.2.8.	X			2.10.1.	X		

## 7.2 Primary feedstock supplies from Estonian forest properties

Table 2. Overview of risk assessment results of all indicators (prior to supplier verification programme (SVP))

Indicator	Initial Risk Rating			Indicator	Initial Risk Rating		
	Low	Specified	Unspecified		Low	Specified	Unspecified
1.1.1.	X			2.2.9.	X		
1.1.2.	X			2.3.1.	X		
1.1.3.	X			2.3.2.	X		
1.2.1.	X			2.3.3.	X		
1.3.1.	X			2.4.1.	X		
1.4.1.	X			2.4.2.	X		
1.5.1.	X			2.4.3.	X		
1.6.1.	X			2.5.1.	X		
2.1.1.	X			2.5.2.	X		
2.1.2.		X		2.6.1.	X		
2.1.3.	X			2.7.1.	X		
2.2.1.	X			2.7.2.	X		
2.2.2.	X			2.7.3.	X		
2.2.3.	X			2.7.4.	X		
2.2.4.	X			2.7.5.	X		
2.2.5.	X			2.8.1.	X		
2.2.6.	X			2.9.1.	X		
2.2.7.	X			2.9.2.	X		
2.2.8.	X			2.10.1.	X		

## 8 Supplier Verification Programme

### 8.1 Description of the Supplier Verification Programme

#### 8.1.1 Primary and secondary feedstock supply from Latvian forest properties

The risk mitigation audit programme is coordinated with the senior management of the company. The supplier audit plan was divided according to the possible biotopes that are included in the database of Latbio. The main goal during the audit is to make sure that raw material suppliers understand the established risks and observe requirements set to jointly mitigate the risks. The objective is to audit all suppliers and evaluate their conformity to the selected criteria.

The supplier audit considers the following values: logging organisation's work safety and logging organisation's evaluation of biotope presence before initiating forest logging, preserving the cultural heritage objects and bird protection, the additionally implemented monitoring system and the implemented credit system for secondary suppliers.

During the audit, the following forms are filled in:

- (1) Audit template approved by the biotope expert — a report, whereby it can be established whether a company is ready to supply an SBE conformant assortment, or the supplier has to introduce corrections and the audit has to be repeated.
- (2) Approved labour safety audit form for logging.
- (3) Resource origin audit template, which includes also auditing the implementation of a credit system for wood processing.

During the risk mitigation process, the company will encourage the acceptance of feedstock from suppliers who are ready to implement the proposed mitigation system. The Supplier Verification Programme procedures are available at the company.

#### 8.1.2 Primary feedstock supplies from Estonian forest properties

Based on the biotope inventory performed in the state and the available documentary information in the consignment documentation accompanying the feedstock, the risk mitigation programme included only document inspection to make sure that high conservation value biotopes are not found at the sites of feedstock origin.

## 8.2 Site visits

### 8.2.1 Primary and secondary feedstock supplies from Latvian properties

The selection of audited territories and suppliers was performed so as to include most of the supply regions and various logging companies and subcontractors, service providers. The logging regions included in the audit programme: municipalities of Madona, Gulbene, Smiltene, Alūksne, Ogre.

Within the framework of the risk identification and mitigation programme of possible biotopes, bird nests, cultural heritage objects and labour safety, 60 forest management units were visited, of which

16 forest units were visited before the initiation of logging;

44 forest units after logging;

24 labour safety visits to logging companies and their subcontractors, service providers;

5 woodworking companies.



The map shows the supply region.

### 8.2.2 Primary feedstock supplies from Estonian forest properties

No site visits required.

## 8.3 Conclusions from the Supplier Verification Programme

### 8.3.1 Primary and secondary feedstock supplies from Latvian forest properties

#### **The labour safety risk programme procedures are available at the company**

Labour safety was inspected starting from 19 January 2016. Audits were previously planned and were carried out in 11 companies, altogether 24 audits (which amounts to 66 % of all suppliers) (suppliers, logging companies and their subcontractors) during logging, the information from suppliers about the logging sites

and service providers was requested in advance. The audited territories and suppliers were selected so as to include inasmuch of the supply regions and various logging companies and their subcontractors as possible. The logging regions included in the audit programme: municipalities of Madona, Gulbene, Smiltene, Alūksne, Ogre. Records and observations were made about each audit.

The conclusion after the performed audits is that logging can be divided in two categories:

- 1) Logging process with machinery considerably reduces labour safety risks. Insubstantial shortcomings were found and defined as low risk
- 2) Logging process with handheld chainsaws is defined as high risk

#### **Identification of biotopes, bird habitats, cultural heritage objects and monitoring risk programme**

**A biotope** monitoring risk programme was initiated on 19 January 2016. Audits were prearranged and 35 forest audits have been carried out. Territories and adjacent areas audited: before logging, during logging and after logging, which according to the Latbio database were possible forest biotopes.

The audited territories and suppliers were selected so as to include most of the supply regions and various logging companies and their subcontractors. The logging regions included in the audit programme: municipalities of Madona, Gulbene, Smiltene, Alūksne, Ogre. Records and observations were made about each audit.

The conclusion made after the audits:

- 1) Suppliers understand the mechanism of biotope evaluation and the necessity to perform it before logging, because there was only one case when there was a high possibility of existing forest biotopes when inspecting the site and it amounts only to 3 % of performed audits.
- 2) Cultural heritage is considered during logging process, the former being regulated by the legislation of Latvia — no violations were found; during the audit, one acknowledgment from a local government about preserving cultural heritage was expressed.
- 3) During the audit, no violations concerning bird monitoring were found — deadwood and standing trees are left in cutovers. Furthermore, various logging restrictions defined in the administrative territories are followed.

During the audit, logging companies are ready to show the territories that are left as biotopes and logging will not be performed.

### **8.3.2 Primary feedstock supplies from Estonian forest properties**

By the time of preparing the report, 2 supplies have occurred and the consignment documentation contained a confirmation that no biotopes have been found at the site of origin of feedstock.

## 9 Mitigation Measures

### 9.1 Mitigation measures

#### 9.1.1 Primary and secondary feedstock supplies from Latvian forest properties

After site monitoring audits, upon evaluating possible biotopes and labour safety risks, the management of the company has decided to exclude those suppliers from the suppliers' list that, at repeated audit, did not conform to the mitigation programme's criteria of permissible outcomes established in the company.

From 01.01.2016, the number of roundwood suppliers and secondary suppliers has been substantially reduced. The FSC or PEFC requirements for organisation of logging and woodworking were implemented as a criterion, along with readiness to comply with the requirements set by SBE.

SIA Graanul Invest, by hiring biotope experts, as well as forest management and labour safety experts, hold additional informative seminars for suppliers to better inform the suppliers about the supply conditions and potential risks, thereby reducing the supply of noncompliant feedstock assortment according to the requirements of SBP/SBE standards.

Supply contracts include conditions of additional requirements for biotope identification, labour safety, restrictions of hardwood tree species and the restriction of maximum diameter. See the following table.

	Riska	Main coments and Mitigation Measure/Galvenie komentāri un mazināšanas pasākumi
2.1.1. and 2.1.2.	<p>The BP has control systems and procedures for verifying that forests and other areas with high conservation values are identified and mapped BP ir kontroles sistēmas un procedūras, lai pārbaudītu, ka meži un citas teritorijas ar augstu saglabāšanas vērtības tiek identificētas un kartētas</p> <p>The SBP has control systems and procedures to identify and address potential threats to forests and other areas with high conservation values from forest management activities SBP ir kontroles sistēmas un procedūras, lai identificētu un novērstu iespējamos draudus mežos un citās jomās ar augstu aizsardzības vērtībām no meža apsaimniekošanas darbībām</p>	
	Woodland Key Habitats (WKH)/ Mežu biotopi (MB)	<p>GI approach "Habitat identification system". LATBio database Felling's audited but table, which is approved by licensed biotope expert, like good tool to identify WKH. Supplier's trainings respect to WKH, by licensed biotope expert. GI izveidota "Meža biotopu identifikācijas sistēma". LATBio datu bāze Cirmsmas audita uzskaites tabula, kuri ir apstiprinājis licenzēts biotopu eksperts, lai identificētu MB. Piegādātāja treniņi atpazīt MB, licencētās biotopu eksperts līdzdalību.</p>
	Wood from Old Country Estates/ Koksne no Old Country Estates	<p>Nobel tree species in cargo can be no more like 20%, and no bigger like 70cm in diameter. It is written in raw material supply contracts. From secondary feedstock GI do not purchase material which is produced from Oak, ash, elm. Cietās lapu koku sugas nevar būt vairāk kā 20%, un nav lielāks diametrs par 70cm. Tas ir rakstīts izejvielu piegādes līgumiem. No sekundāro izejvielu GI nepērk materiālu, kas tiek ražots no ozols, osis, goba.</p>
	Bird Nesting sites/Putnu ligzdošanas vietām	<p>GI approach "Habitat identification system". LATBio database Felling's audited but table, which is approved by licensed biotope expert, like good tool to identify BIRD NESTING SITES. Supplier's trainings respect to bird nesting sites, by licensed biotope expert GI izstrādāta "Biotopu identifikācijas sistēma". LATBio datu bāze Cirmsmas audita uzskaites tabula, kuri ir apstiprinājis licenzēts biotopu eksperts, tāpat kā labs instruments, lai noteiktu putnu ligzdošanas vietas. Piegādātāja treniņi atpazīt putnu ligzdošanas vietas, ar licencētās biotopu eksperts.</p>
2.8.1.	<p>The SBP has control systems and procedures for verifying that appropriate safeguards are put in place to protect the health and safety of forest workers SBP ir kontroles sistēmas un procedūras, lai pārbaudītu, vai attiecīgie drošības pasākumi ir ieviesti, lai aizsargātu veselību un drošību, mežā strādājošiem</p>	<p>GI approach "Work safety system". Felling's audited but table, which is approved by licensed work safety specialist, like good tool to identify work safety in fellings. GI izstrādāta "Darba drošības sistēma". Cirmsmas audita uzskaites tabula, kura ir apstiprinājis ar licencētā darba drošības speciālistu, instruments, lai noteiktu darba drošību mežizstrādē.</p>

## 9.1.2 Primary feedstock supplies from Estonian forest properties

The consignment documents of each truckload is checked before the cargo is inspected. The feedstock acceptance procedures provide that feedstock from areas, which, according to the results of biotope inventory of the state, have biotope presence, will not be accepted.

## 9.2 Monitoring and outcomes

### 9.2.1 Primary and secondary feedstock supplies from Latvian forest properties

Upon detecting labour safety violations and possible presence of biotopes during supplier audits, the supply from 3 suppliers was restricted. Supply municipalities – Cēsis, Madona, Alūksne, Limbaži.

After reducing the number of suppliers, and also by including conditions of supply in the contracts regarding additional requirements for labour safety and biotope identification by suppliers, biotope characteristics according to <http://latbio.lv/MBI/>, feedstock flow from risk areas is monitored.

To reduce the number of Roundwood suppliers by 80 % from 01.01.2016, the FSC or PEFC requirements were implemented as a criterion for organising logging, along with readiness to comply with the requirements set by SBE.

After on-site monitoring audits, upon evaluating the possible biotopes and labour safety risks, the management has decided to exclude those suppliers from the suppliers' list that, during the audit, did not conform to the mitigation programme criteria of permissible outcomes established at the company. By 01.05.2016, six roundwood suppliers were excluded.

Logging companies have developed an understanding about the SBE requirements and have accepted the necessary procedures to fulfil them, and the process is ongoing.

As a result of the audits: as of 01.05.2016, there are 3 supply companies that can be recognised as SBP Compliant Biomass Suppliers to 100 %, and 15 suppliers that are in the process of implementing the system and the implementation process is planned to be finished until the end of year 2016. It is planned that by the year 2017 all proposed requirements for primary feedstock suppliers will correspond to the SBE requirements.

As a result of the audit, as of 28.08.2016, there are 2 secondary feedstock supply companies that are actively implementing an accounting and control system and are ready for a final audit. It is planned that by the year 2017 all proposed requirements for secondary feedstock suppliers will correspond to the SBP requirements.

### 9.2.2 Primary feedstock supplies from Estonian forest properties

It has been confirmed that cargo consignment documents for feedstock from Estonian forest properties contain sufficient information to consider that the risk of receiving feedstock from biotope regions is low.



## 10 Detailed Findings for Indicators

Detailed information about each indicator is provided in risk assessments.

Risk assessment for Latvia is available at <http://www.latgran.com/en/policy/sustainable-biomass-partnership>

Risk assessment for Estonia is available at <http://www.sustainablebiomasspartnership.org/docs/SBP-endorsed-Regional-Risk-Assessment-for-Estonia.pdf>

## 11 Review of Report

### 11.1 Peer review

The end version of the report was sent to specialists working with wood industry, forest management and forest environment processes.

The report was reviewed and returned with comments by:

**Regarding the SBP section: Henrik Välja** — Estonian Forest and Wood Industries Association Tallinn Technical University

**Regarding the SBP/ SBE section: Jānis Rozītis** — World Wildlife Foundation (WWF Latvia) — experienced in sustainable forest management practice, assessment.

### 11.2 Public or additional reviews

No public or additional reviews have been made.

## 12 Approval of Report

Approval of Supply Base Report by senior management			
Report Prepared by:	<i>Dainis Lūkins</i>	<i>Procurement Manager</i>	<i>May 18, 2016</i>
	<b>Name</b>	<b>Title</b>	<b>Date</b>
The undersigned persons confirm that I/we are members of the organisation's senior management and do hereby affirm that the contents of this evaluation report were duly acknowledged by senior management as being accurate prior to approval and finalisation of the report.			
Report approved by:	<i>Haralds Vīgants</i>	<i>Executive Director</i>	<i>May 18, 2016</i>
	<b>Name</b>	<b>Title</b>	<b>Date</b>
Report approved by:	<i>[name]</i>	<i>[title]</i>	<i>[date]</i>
	<b>Name</b>	<b>Title</b>	<b>Date</b>
Report approved by:	<i>[name]</i>	<i>[title]</i>	<i>[date]</i>
	<b>Name</b>	<b>Title</b>	<b>Date</b>

## 13 Updates

Not applicable.

### 13.1 Significant changes in the Supply Base

Not applicable.

### 13.2 Effectiveness of previous mitigation measures

Not applicable.

### 13.3 New risk ratings and mitigation measures

Not applicable.

### 13.4 Actual figures for feedstock over the previous 12 months

01.01.2015- 31.12.2015 is 400,000 – 600,000 tonnes

### 13.5 Projected figures for feedstock over the next 12 months

01.01.2016- 31.12.2016 is 400,000 – 600,000 tonnes